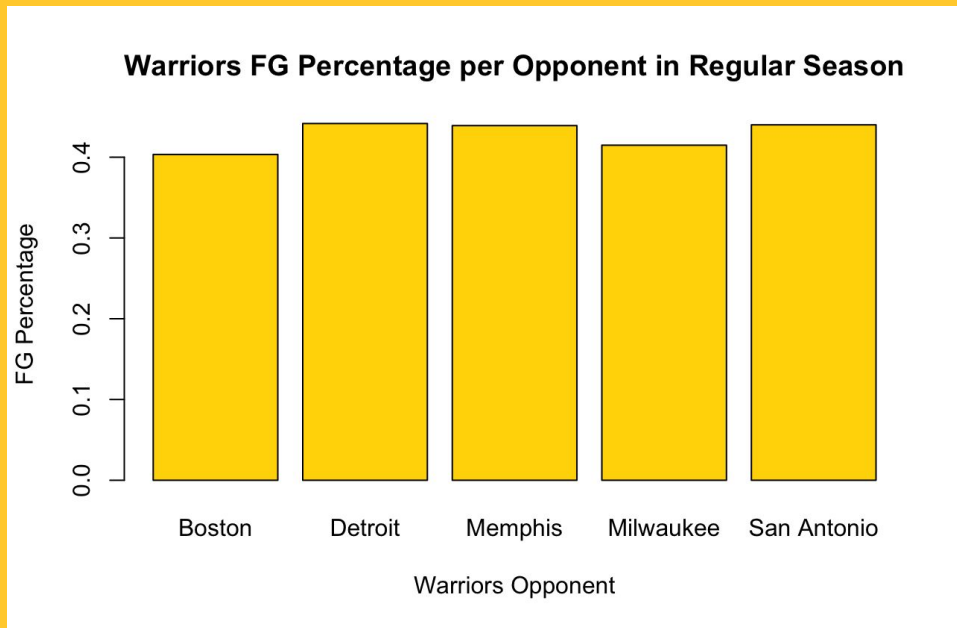


# Stopping the 2021-22 Golden State Warriors

The Ohio State University Sports Analytics  
Association



# What strategies were successful in limiting the Golden State offense?



- Season Average: 46.9%
- Lowest: Celtics, Bucks

# Atypical and Lower-Percentage Shot Selection

## Warriors Offense Regular Season (82 games)

Layup	Catch & Shoot	TOV	Off-Movement	3+D Pull-Up	Floater
20.2549293	14.1306513	11.5813583	9.0718980	6.6520613	6.4927305
1-2D Pull-Up	Take Side	Dunk	NULL	Side Out	PU Fade
5.8354909	3.9832703	3.9334794	2.6787493	2.4497112	2.4198367
Face-Up	Off-Lob / Tip	Take FT	Hook	Post Fade	Timeout
1.4041028	1.3742282	1.2348138	1.0655248	0.8763195	0.8464449
Putback	Loose Ball	Run Clock	Leaner	Heave	SC Violation
0.6970723	0.6871141	0.6074487	0.5775742	0.4580761	0.3385780
Jump Ball	Def. 3 Sec				
0.2091217	0.1394145				

## Warriors Offense vs Celtics (2 games)

Catch & Shoot	Layup	Off-Movement	1-2D Pull-Up	TOV	3+D Pull-Up
17.7215190	14.3459916	12.6582278	7.1729958	7.1729958	5.4852321
Floater	Take Side	Leaner	NULL	Dunk	Hook
4.2194093	4.2194093	2.9535865	2.9535865	2.5316456	2.1097046
Post Fade	PU Fade	Side Out	Take FT	Face-Up	Heave
2.1097046	2.1097046	2.1097046	2.1097046	1.6877637	1.2658228
Off-Lob / Tip	Loose Ball	Putback	Timeout	Jump Ball	Run Clock
1.2658228	0.8438819	0.8438819	0.8438819	0.4219409	0.4219409
SC Violation					
0.4219409					

## Warriors Offense vs Bucks (2 games)

Catch & Shoot	Layup	Off-Movement	TOV	1-2D Pull-Up	Floater
16.7938931	16.0305344	10.6870229	10.3053435	6.4885496	5.7251908
3+D Pull-Up	NULL	Dunk	PU Fade	Post Fade	Side Out
5.3435115	4.1984733	3.8167939	3.8167939	2.6717557	2.6717557
Take Side	Loose Ball	Face-Up	Off-Lob / Tip	Hook	Leaner
2.6717557	1.5267176	1.1450382	1.1450382	0.7633588	0.7633588
Putback	Timeout	Def. 3 Sec	Heave	Jump Ball	Run Clock
0.7633588	0.7633588	0.3816794	0.3816794	0.3816794	0.3816794
Take FT					
0.3816794					

# Not Getting the Easy Looks They Want

## Warriors Offense Regular Season (82 games)

Rim	Mid-Left Above Break 3	Right Above Break 3
34.3955387	8.0860386	7.7275443
Mid-Right Above Break 3	Left Above Break 3	Right Corner 3
7.1400119	6.6221868	4.6205935
NULL	Left Corner 3	Left Short Mid
4.5608445	3.6446923	2.9277036
Mid-Left Midrange	Right Short Mid	Mid-Right Midrange
2.9277036	2.7484565	2.7285401
Left Midrange	Right Midrange	Mid-Right Short Paint
2.2007568	2.0613424	1.7426807
Mid-Left Short Paint	Short Backcourt	Mid-Right Deep Paint
1.5435172	1.2547301	1.0953993
Mid-Left Deep Paint	Deep Backcourt	
1.0356503	0.9360685	

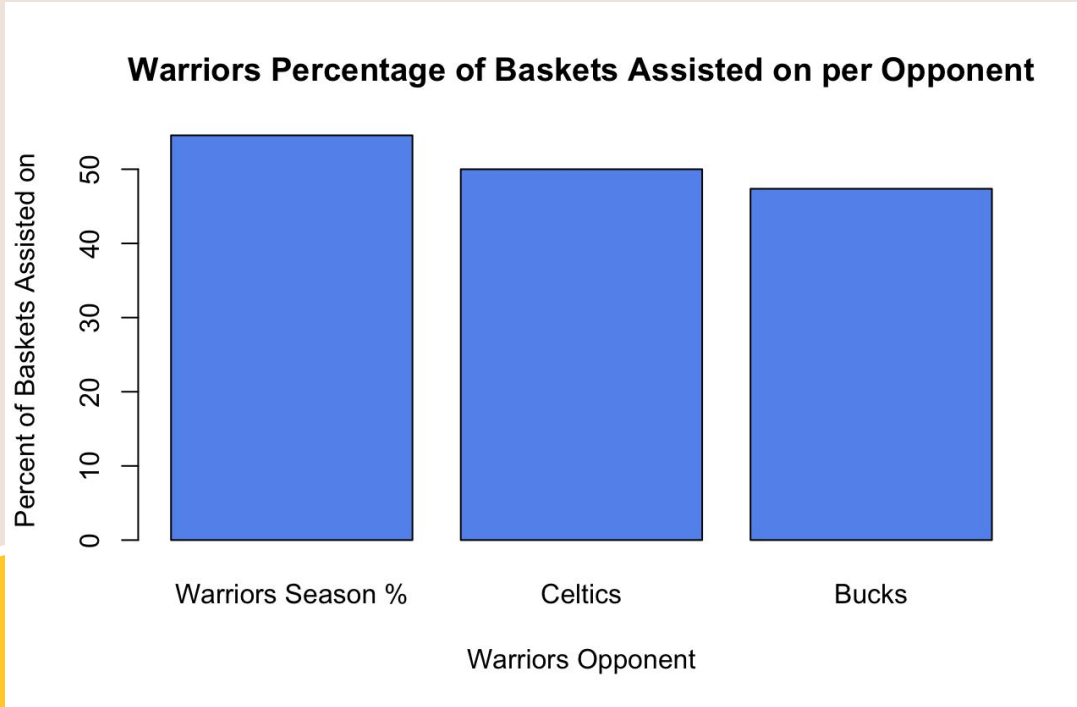
## Warriors Offense vs Celtics (2 games)

Rim	Mid-Right Above Break 3	Right Above Break 3
25.3164557	9.7046414	9.7046414
Mid-Left Above Break 3	Right Corner 3	Left Above Break 3
8.8607595	5.9071730	5.4852321
Left Short Mid	Right Short Mid	Left Corner 3
5.4852321	5.4852321	5.0632911
NULL	Left Midrange	Mid-Left Midrange
4.2194093	2.9535865	2.5316456
Mid-Left Deep Paint	Right Midrange	Deep Backcourt
2.1097046	2.1097046	1.2658228
Mid-Right Midrange	Mid-Left Short Paint	Mid-Right Deep Paint
1.2658228	0.8438819	0.8438819
Mid-Right Short Paint	Short Backcourt	
0.4219409	0.4219409	

## Warriors Offense vs Bucks (2 games)

Rim	Mid-Left Above Break 3	Mid-Right Above Break 3
29.7709924	12.5954198	8.0152672
Left Above Break 3	Right Above Break 3	Mid-Right Midrange
7.6335878	7.6335878	5.3435115
NULL	Right Corner 3	Right Midrange
4.5801527	3.8167939	3.8167939
Mid-Left Midrange	Right Short Mid	Left Short Mid
3.0534351	2.6717557	1.9083969
Mid-Left Short Paint	Left Corner 3	Mid-Left Deep Paint
1.9083969	1.5267176	1.5267176
Left Midrange	Mid-Right Short Paint	Short Backcourt
1.1450382	1.1450382	1.1450382
Mid-Right Deep Paint		
0.7633588		

# Lack of Ball Movement



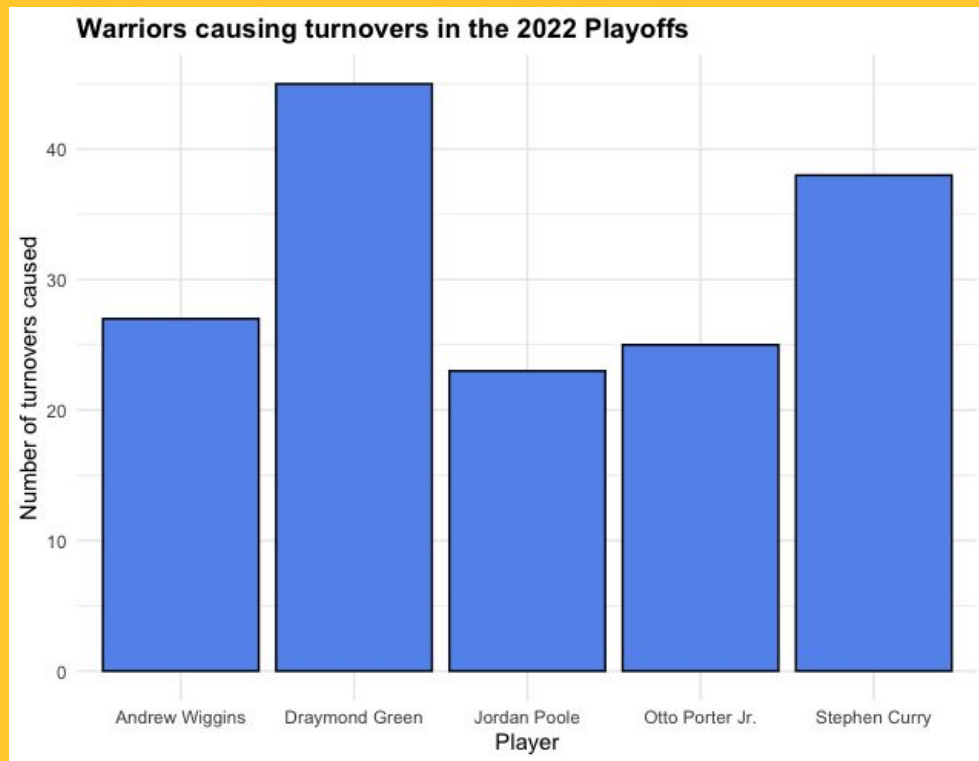
# What strategies did the Warriors take advantage of the most?

- Layups and overall just shots at the rim
  - Makes sense these are the highest percentage shots you can take
- Catch and Shoot 3s (good ball movement leads to open shots)
- Baskets at the Rim or 3 pointers
- Strong ball movement, assisted on ~55% of their baskets

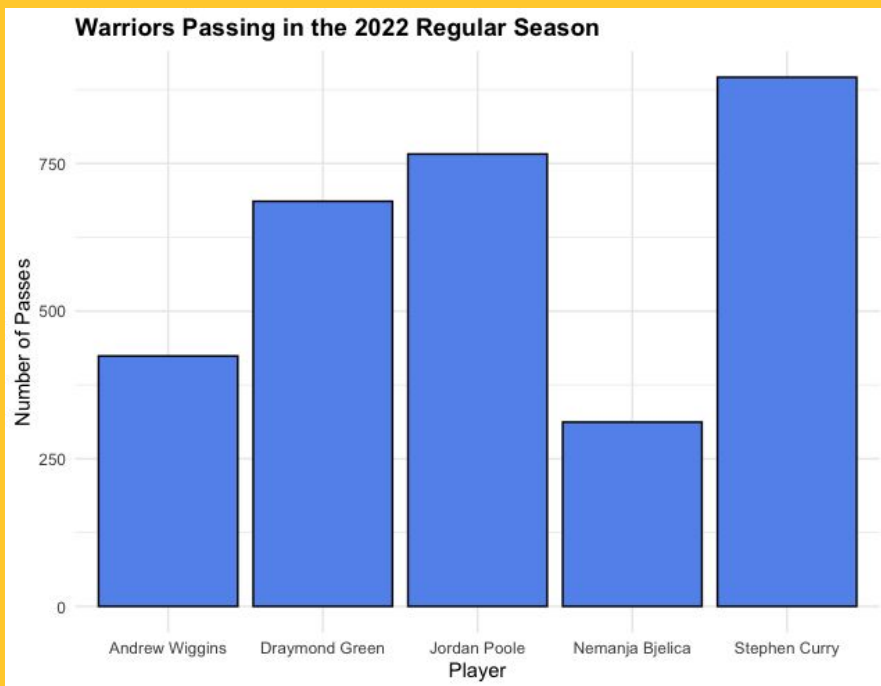
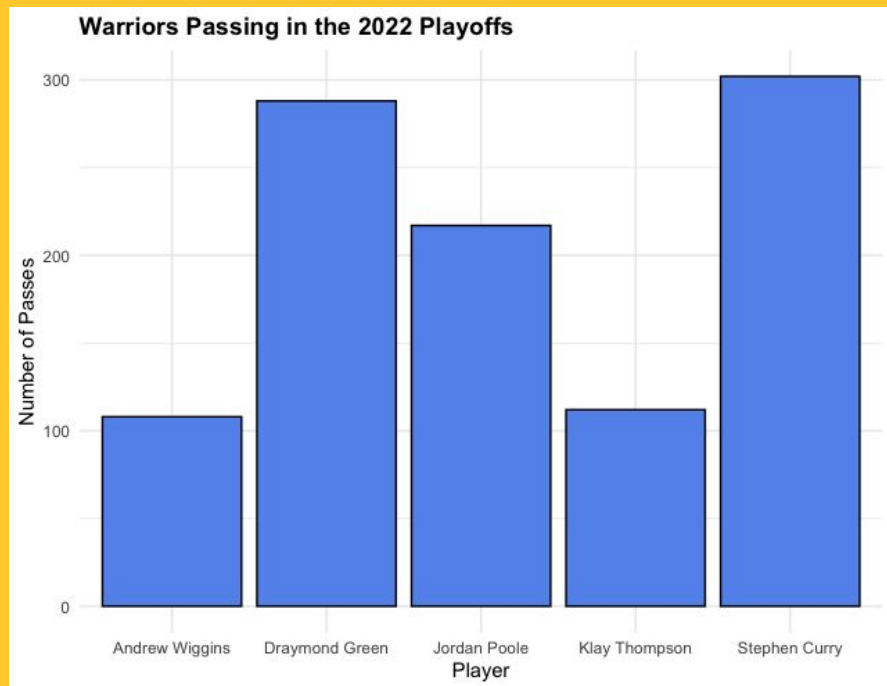


# Why did the Warriors improve during their run in the playoffs?

Zone Defense - The warriors used zone defense for 5% of defensive possessions in the 2022 playoffs, double the estimated 2.5% of half court possessions (according to Hoop-Social.com)



## Draymond Stepping up in the pass game was key for the Warriors playoff success



Layups: Jordan Poole, Steph Curry, and Andrew Wiggins layups were the most common shot to produce points in the playoffs.



Which 3 players improved most during their playoff run?





# Stephen Curry

	G	GS	Pts (/100)	Reb (/100)	Ast (/100)	Usg Rate	TS%	TOV%	PPP	Ortg	Drtg
Regular Season	64	64	35.9	7.4	8.9	23.99228	0.6319985	13.19565	1.044122	115	108
Postseason	22	18	38.9	7.4	8.3	31.80712	0.6426406	10.29327	1.087114	119	110

- 8% Usage Rate increase
- -3% TOV % decrease
- Scoring and shooting at efficiency we are used to (most 3P /100 possessions in Playoffs)





# Stephen Curry

## Results of Curry Plays:

### Reg. Season

Type	PctofTotal
3+D Pull-Up	0.2052821128
Layup	0.1686674670
Off-Movement	0.1566626651
TOV	0.1212484994
Floater	0.0768307323

### Postseason

Type	PctofTotal
3+D Pull-Up	0.188963211
Layup	0.160535117
Floater	0.130434783
Off-Movement	0.118729097
TOV	0.093645485

## Curry Ball-Handler Share:

### Regular Season

Player	PctofTotal
Stephen Curry	0.1913685

## Curry Court Zones:

### Reg. Season

Zone	PctofTotal
Rim	0.229891957
Mid-Left Above Break 3	0.143457383
Mid-Right Above Break 3	0.118847539
Right Above Break 3	0.109843938
Left Above Break 3	0.087034814

### Postseason

Zone	PctofTotal
Rim	0.23578595
Mid-Left Above Break 3	0.13210702
Mid-Right Above Break 3	0.11538462
Left Above Break 3	0.07859532
Right Above Break 3	0.06354515

### Postseason

Player	PctofTotal
Stephen Curry	0.2630757



# Stephen Curry

## *Tendencies and Skills:*

- All-time shooter
- Elite Shot creator
- Utilizes off-ball movement, coming off screens in regular season
- Higher Usage Rate and Ball-Handler share in postseason
- Attacks heavy perimeter defense to create for himself inside the arc in postseason

## *Adjustments:*

- Tight perimeter defense, limit open looks
- Double team if necessary, force him to pass to other options
- In regular season, communicate and track his off-ball movement
- In postseason, prioritize matching him up with good on-ball defenders



# Andrew Wiggins

	G	GS	Pts (/100)	ORB (/100)	Reb (/100)	Ast (/100)	Usg Rate	TS%	TOV%	PPP	Ortg	Drtg
Regular Season	73	73	26.3	1.8	6.8	3.4	20.52586	0.5865322	8.999514	1.0183233	109	109
Postseason	22	22	23.4	3.5	10.6	2.6	20.80293	0.5684309	8.250825	0.9983498	112	110

- REB up 4 per 100 possessions (*most* by SF in Playoffs)
- ORB up 2 per 100 possessions (*most* by SF in Playoffs)
- Maintained similar offensive efficiency





# Andrew Wiggins

## Results of Wiggins Plays:

### Reg. Season

Type	PctofTotal
Layup	0.1876412962
Catch & Shoot	0.1853805576
Floater	0.0934438583
TOV	0.0806330068
3+D Pull-Up	0.0685757347

### Postseason

Type	PctofTotal
Catch & Shoot	0.221621622
Layup	0.194594595
Floater	0.127027027
TOV	0.081081081
Dunk	0.059459459

## Wiggins Ball-Handler Share:

### Regular Season

Player	PctofTotal
Andrew Wiggins	0.1153945

## Wiggins Court Zones:

### Reg. Season

Zone	PctofTotal
Rim	0.323981296
Right Above Break 3	0.080828323
Right Corner 3	0.064128257
Mid-Right Above Break 3	0.048096192
Left Above Break 3	0.041416166

### Postseason

Zone	PctofTotal
Rim	0.459459459
Right Above Break 3	0.067567568
Mid-Right Above Break 3	0.056756757
Mid-Left Above Break 3	0.051351351
Right Corner 3	0.048648649

### Postseason

Player	PctofTotal
Andrew Wiggins	0.1129977



# Andrew Wiggins

## *Tendencies and Skills:*

- Spends more time on right side of court
- Plays more off-ball, took a backseat playing alongside Curry in playoffs
- Showed physicality under the rim in playoffs, on both the offensive and defensive sides

## *Adjustments:*

- Force left to make uncomfortable
- Cut off back-door, baseline cut lanes to the rim
- Be weary of off-ball movement
- If Warriors begin to control rebound margin, match up bigger size or more physical players against him



# Jordan Poole

	G	GS	Pts (/100)	Reb (/100)	Ast (/100)	Usg Rate	TS%	TOV%	PPP	Ortg	Drtg
Regular Season	76	51	30.0	5.6	6.5	24.07363	0.6291871	13.72941	1.031541	112	110
Postseason	22	5	30.4	5.1	6.8	24.49336	0.6917143	15.66935	1.102767	119	113

- 6 % TS% increase, (FG, FTA, 3FGA)
- 7 point Ortg increase
- Became more efficient offensively while staggering minutes coming off bench







# Jordan Poole

## Results of Poole Plays:

### *Reg. Season*

Type	PctofTotal
Layup	0.1997327989
Off-Movement	0.1382765531
TOV	0.1242484970
3+D Pull-Up	0.1042084168
Catch & Shoot	0.0988643955

### *Postseason*

Type	PctofTotal
Layup	0.250659631
TOV	0.139841689
3+D Pull-Up	0.137203166
Off-Movement	0.079155673
Take Side	0.079155673

## Poole Ball-Handler Share:

### *Regular Season*

Player	PctofTotal
Jordan Poole	0.1652588

## Poole Court Zones:

### *Reg. Season*

Zone	PctofTotal
Rim	0.279893120
Left Above Break 3	0.101536406
Mid-Left Above Break 3	0.098196393
Mid-Right Above Break 3	0.094856379
Right Above Break 3	0.093520374

### *Postseason*

Zone	PctofTotal
Rim	0.306068602
Mid-Left Above Break 3	0.118733509
Mid-Right Above Break 3	0.087071240
Left Above Break 3	0.084432718
Right Above Break 3	0.068601583

### *Postseason*

Player	PctofTotal
Jordan Poole	0.1693989



# Jordan Poole

## *Tendencies and Skills:*

- Elite shooter
- Similar court zone data to Curry
- As a starter (RS) more shots generated off-ball with Curry as primary ball-handler
- Coming off the bench (PS), more shots generated off-dribble

## *Adjustments:*

- Tight perimeter defense, limit open looks
- If playing with starting unit, prioritize matching him with a good off-ball defender
- If playing with second unit, prioritize matching him with a good on-ball defender